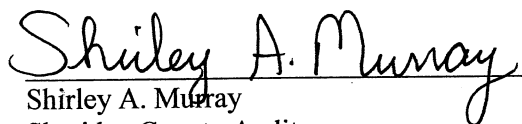


**STATE BUILDING CODE ADOPTED**

It was moved by Planning Commissioner Korschak to adopt the State Building Code to the Sheridan County Zoning Plan effective immediately and to add a disclaimer on the back side of the building permit stating that the applicant is responsible for complying with state and federal laws, seconded by Planning Commissioner Lloyd Bauer. Roll call vote – Korschak – yes, Bauer – yes, Erdmann – yes, Sauter – yes, Waltz – yes, Schindler – yes All voting “yes” the motion was carried.

Dated this 16<sup>th</sup> day of March, 2004

  
Shirley A. Murray  
Sheridan County Auditor

State of North Dakota  
County of Sheridan

I, Shirley A. Murray, County Auditor in and for said County and State, do HEREBY CERTIFY that I have carefully compared the foregoing with the original record in my office and that the same is a true and correct copy thereof.

IN WITNESS WHEREOF, I have hereunto set my hand and affixed the seal of said Sheridan County, at McClusky, in said County, on this 16<sup>th</sup> day of March, 2004.

*Shirley A. Murray*  
Shirley A. Murray  
Sheridan County Auditor



COPIED	<input checked="" type="checkbox"/>
COMPRD	<input checked="" type="checkbox"/>
GR TOR	<input checked="" type="checkbox"/>
GR TEE	<input checked="" type="checkbox"/>
TRACT	<input checked="" type="checkbox"/>
RECT	<input checked="" type="checkbox"/>
CANCEL	<input type="checkbox"/>

Document No. 113154  
 OFFICE OF COUNTY RECORDER  
 County of Sheridan, North Dakota  
 I hereby Certify that the within instrument  
 was filed in this office for record on the  
17<sup>th</sup> day of March A.D.  
2004 at 9:15 o'clock A. M.,  
 and was duly recorded in Book C-79  
 of Misc. on Page 49.  
Joyce H. Dockter  
 County Recorder  
 By Kathleen C. Mindt Deputy

No Fee

Inst. rec'd from/returned to: Shirley A. Murray  
Sheridan County Auditor  
McClusky, N. Dak. 58463

RESOLUTION

WHEREAS, the Planning Commission has adopted an amendment to the Sheridan County Zoning Plan to add wind turbines and related infrastructure (that also includes the met towers -wind monitoring units) to 4.4.1.c as per application requested by Otter Tail Energy Services Co. as filed in the County Auditors office;

WHEREAS, the Planning Commission has held a public hearing on February 5, 2008 and adopted the amendment of adding wind turbines and related infrastructure (including the met towers – wind monitoring units) as a conditional use for agriculture zoned land;

THEREFORE, BE IT RESOLVED THAT, Sheridan County, by and through the County Commissioners, adopts the amendment to add wind turbines and related infrastructure (including met towers –wind monitoring units) as a conditional use for agriculture zoned land to 4.4.1.c of the Sheridan County Zoning Plan as filed in the County Auditor's Office.

ADOPTED: February 5, 2008

BY: Sheridan County Commissioners

Gordon F. Erdman

Eldon G. Thomas

Shirley J. Jorgensen

ATTEST:

Shirley A. Murray

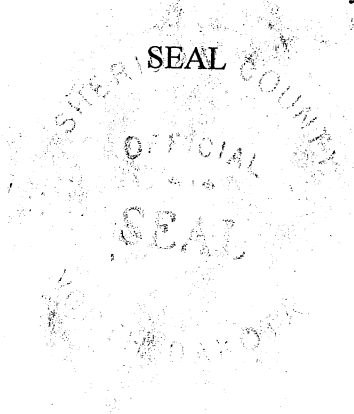
Returned To: SHIRLEY MURRAY  
SHERIDAN COUNTY COURTHOUSE  
MCCLUSKY, N.DAK. 58463

State of North Dakota  
County of Sheridan

I, Shirley A. Murray, County Auditor in and for said County and State, do HEREBY CERTIFY that I have carefully compared the foregoing with original record in my office and the same is a true and correct copy thereof.

IN WITNESS WHEREOF, I have hereunto set my hand and affixed the seal of said Sheridan County, at McClusky, in said County on this 20<sup>th</sup> day of February, 2008.

Shirley A. Murray  
Shirley A. Murray  
Sheridan County Auditor



- COPY
- COMPRD
- CHYTOR
- CHTEE
- TRACT
- RELT
- CANCD

**OFFICE OF COUNTY RECORDER 115800**  
**County of Sheridan, North Dakota**

I hereby certify that the within instrument was filed in this office for record on 02/20/2008 at 11:19 AM, and was duly record in Book C-83 on Page 0049.

County Recorder Joyce H. Dockett  
By Kathleen C. Mindt Deputy

Fee: \$0.00 Return To: SHIRLEY MURRAY  
SHERIDAN COUNTY COURTHOUSE  
MCCLUSKY, N.DAK. 58463

## Sheridan County Zoning Maps

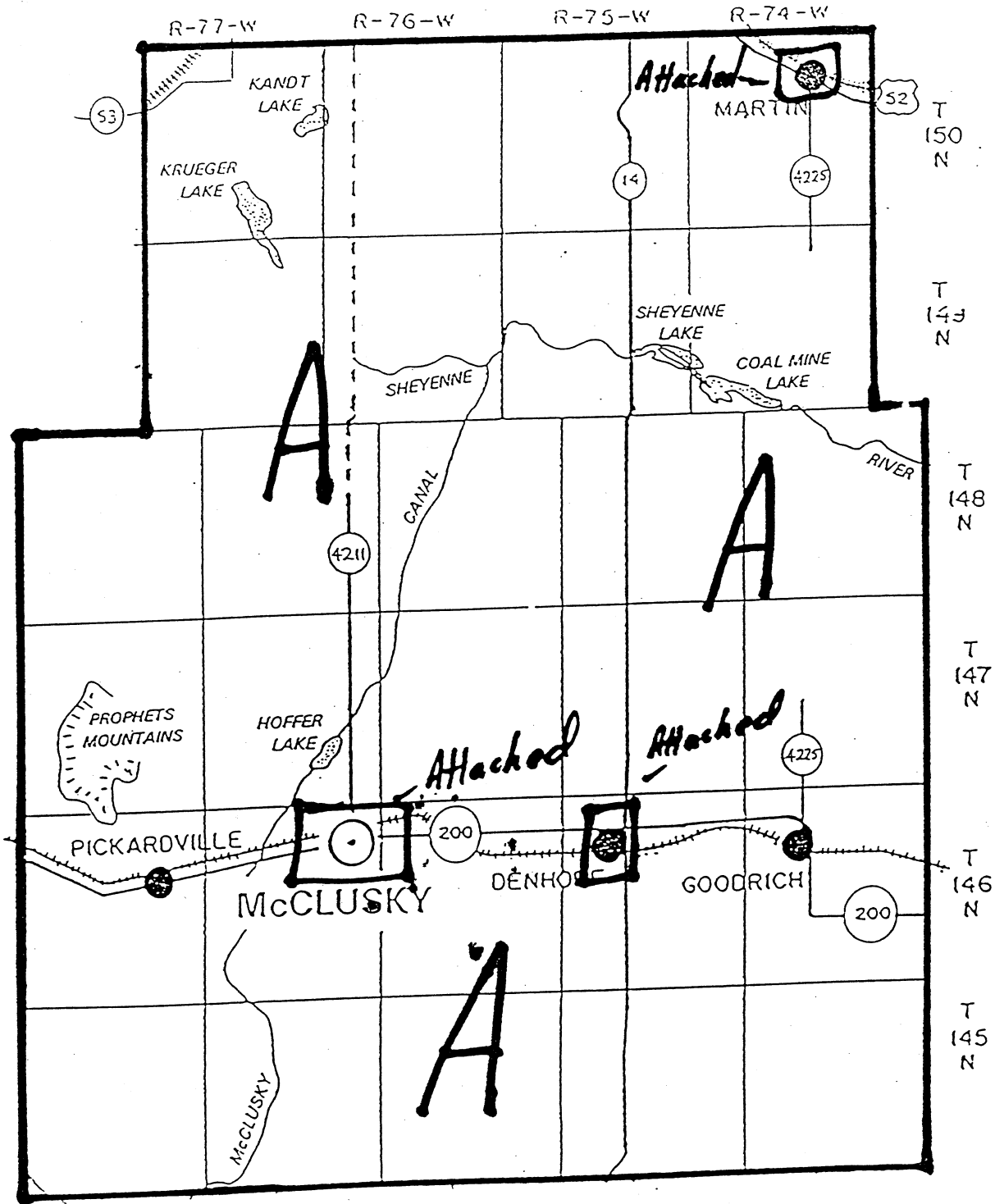
R - Residential District

C - Commercial District

A - Agricultural District

Areas in Commercial zoning district and the Residential zoning district are shown on the attached maps. All other areas of the county, outside incorporated communities, are in the Agricultural zoning district.

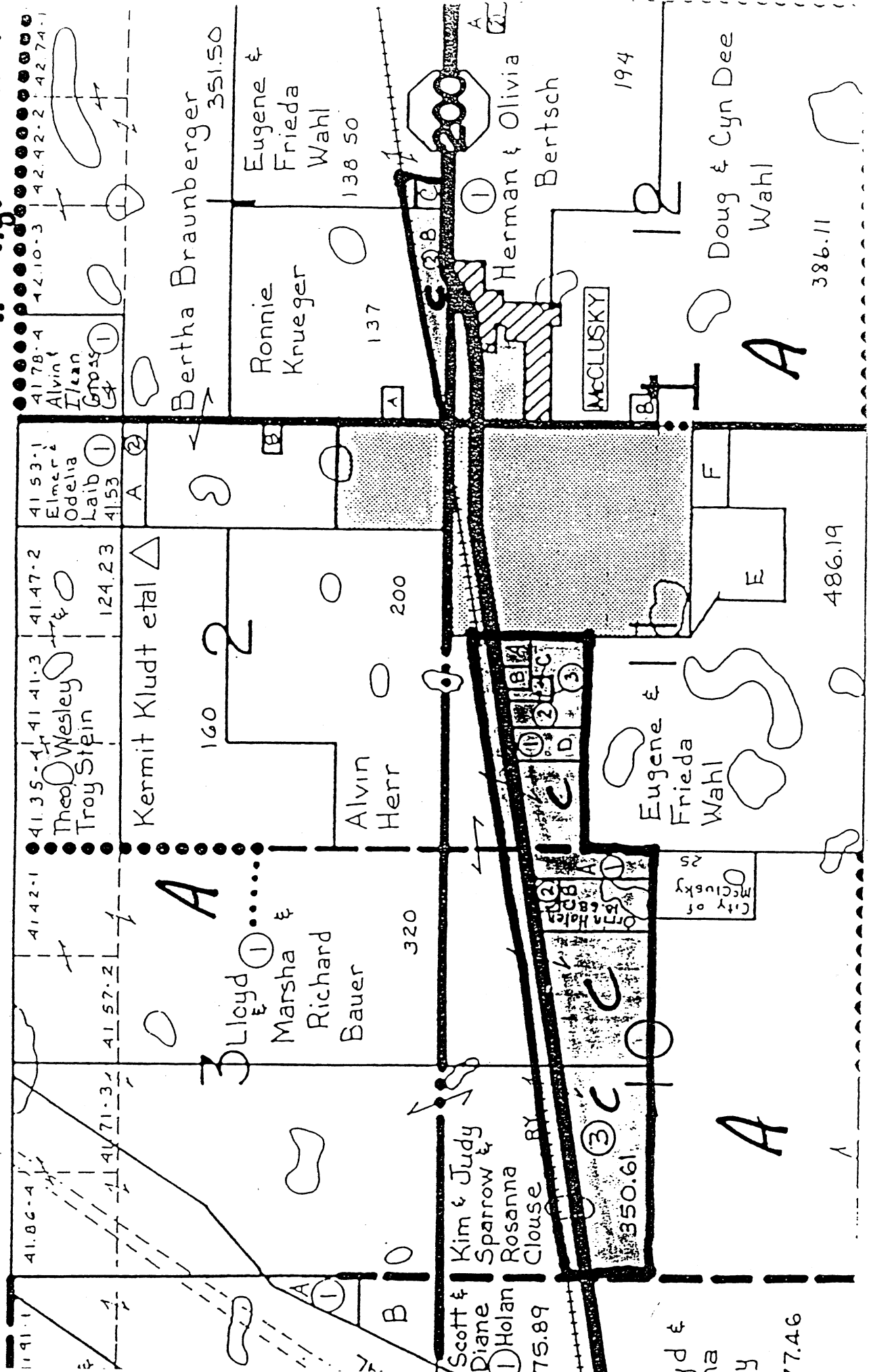
# Zoning Map



SHERIDAN COUNTY  
NORTH DAKOTA

A - Agricultural District

**C - Commercial**  
**A - Agricultural**



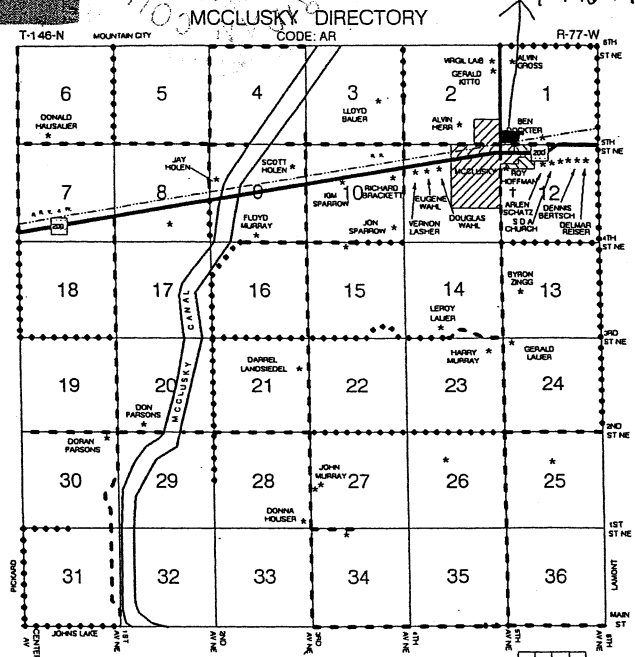
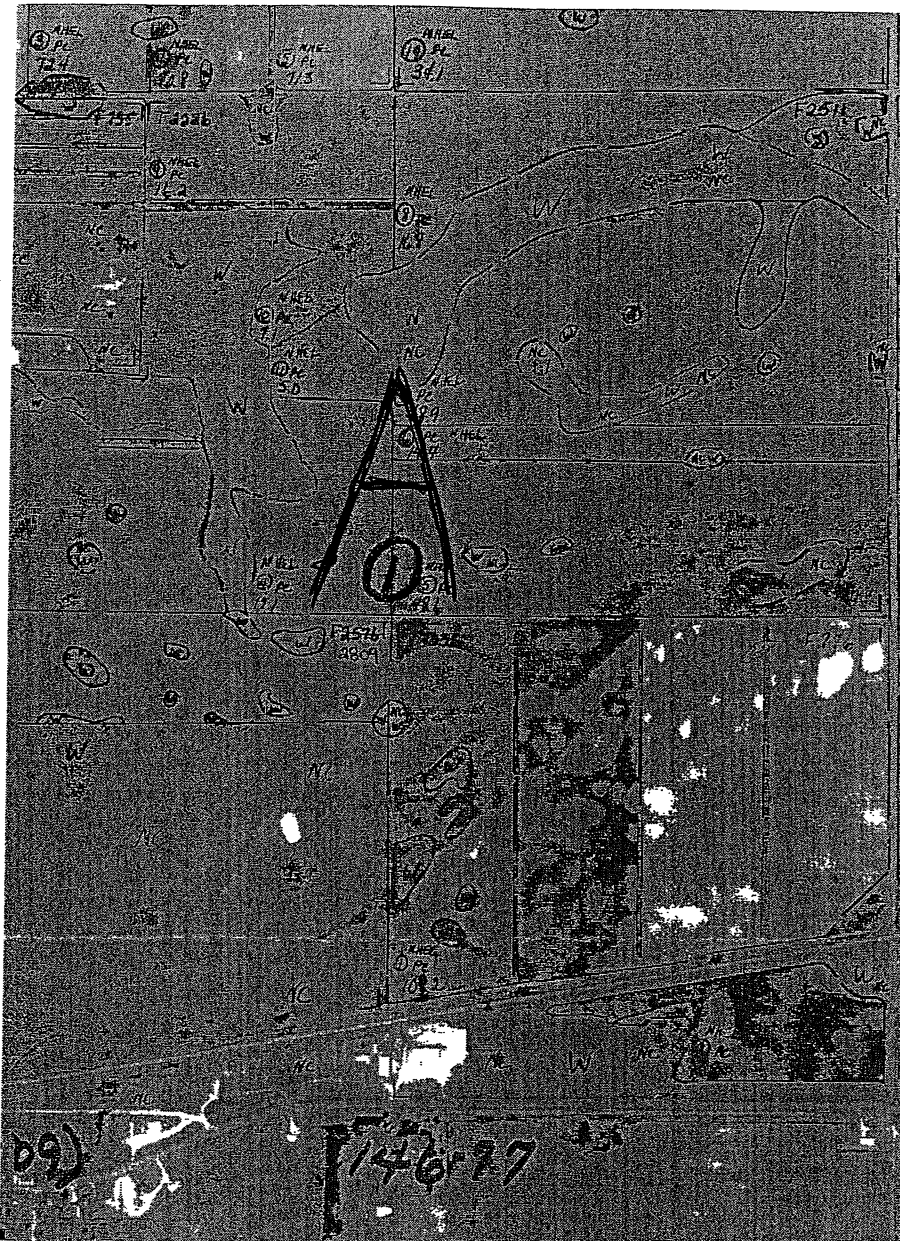
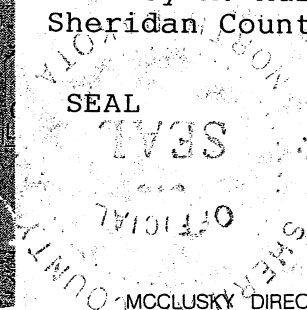
Zoning Change Ordered  
 by the Sheridan County  
 Zoning Board on September  
 19th, 2003.  
 Zoned to Commercial  
 Outlot A 1-146-77  
 containing 3.126 acres  
 as shown on plat map.

State of North Dakota  
 County of Sheridan

I, Shirley A. Murray, County Auditor in and for said County and State, do HEREBY CERTIFY that I have carefully compared the foregoing with the original record in my office and that the same is a true and correct copy thereof. IN WITNESS WHEREOF, I have here unto set my hand and affixed the seal of said Sheridan County, at McClusky in said County, on this 19th day of September, 2003.

*Shirley A. Murray*  
 Shirley A. Murray  
 Sheridan County Auditor

SEAL



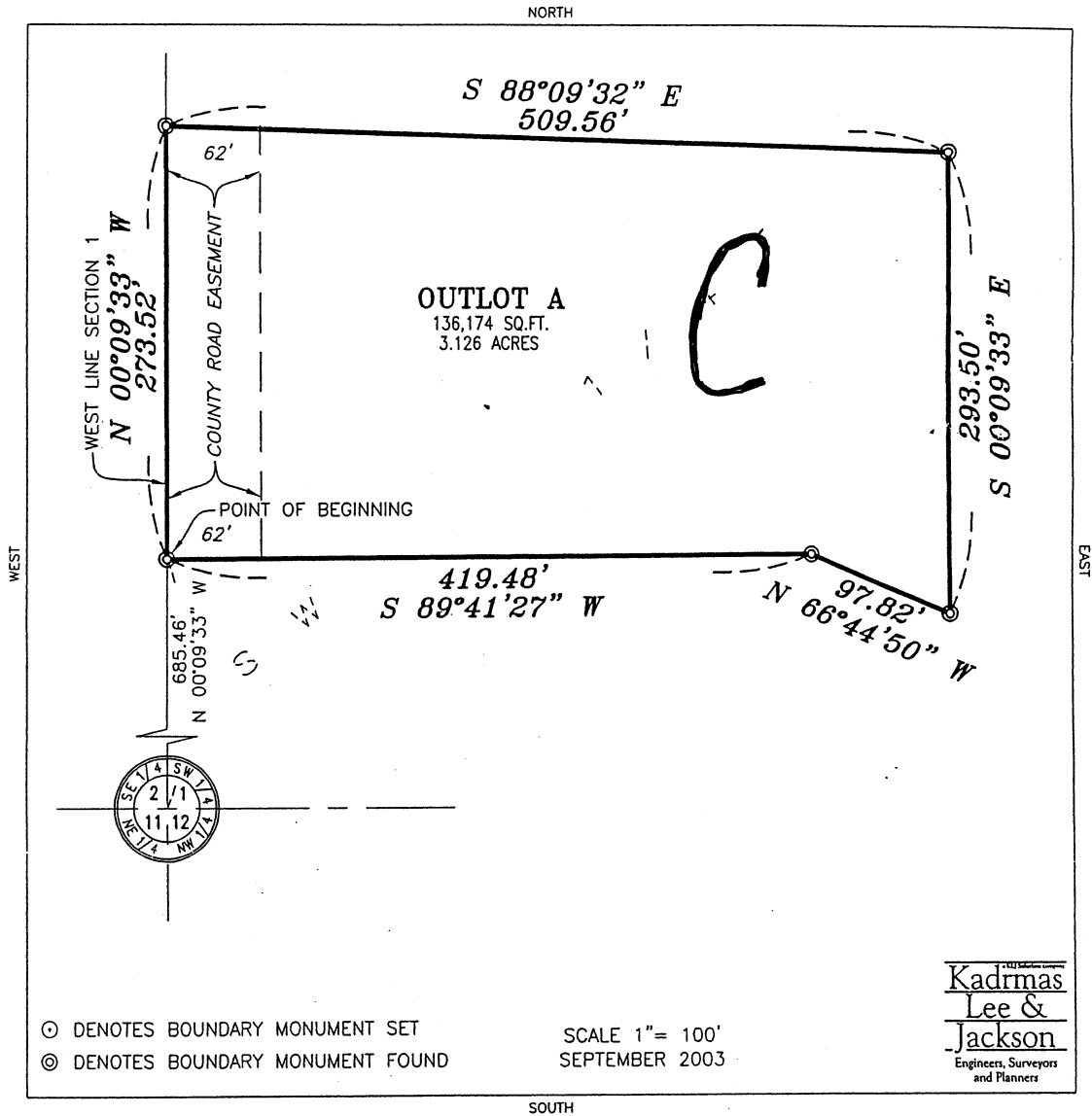
Document No. **112899**  
 OFFICE OF COUNTY RECORDER  
 County of Sheridan, North Dakota  
 I hereby Certify that the within instrument  
 filed in this office for record on the  
 2nd day of September A.D.  
 2003 at 11:25 o'clock A. M.,  
 was duly recorded in Book C-78  
 Misc. on Page 454.  
 Joyce H. Dockter  
 County Recorder  
*Kathleen C. Mundt* Deputy

- COPYD
- COMPRD
- GRTOR
- GRTEE
- TRACT
- RECT
- CANDD

Fee  
 st.rec'd from/returned to:  
 Sheridan County Auditor  
 McClusky, N. Dak. 58463



Present Owner HARLEY HOUSER



Description

TRACT \_\_\_\_\_ OUTLOT A Section 1 Township 146 N  
Range 77 W , described as follows:

A TRACT OF LAND LYING IN THE SOUTHWEST QUARTER OF SECTION 1, TOWNSHIP 146 NORTH, RANGE 77 WEST OF THE FIFTH PRINCIPAL MERIDIAN, SHERIDAN COUNTY, NORTH DAKOTA, MORE PARTICULARLY DESCRIBED AS FOLLOWS:

COMMENCING AT THE SOUTHWEST CORNER OF SAID SECTION 1; THENCE ALONG THE WEST LINE OF SAID SECTION 1, N 00°09'33" W, 685.46 FEET TO THE POINT OF BEGINNING; THENCE FROM SAID POINT OF BEGINNING, CONTINUING ALONG SAID WEST LINE, N 00°09'33" W, 273.52 FEET; THENCE S 88°09'32" E FOR 509.56 FEET; THENCE S 00°09'33" E, 293.50 FEET; THENCE N 66°44'50" W, 97.82 FEET; THENCE S 89°41'27" W, 419.48 FEET TO THE SAID POINT OF BEGINNING.

SAID TRACT CONTAINS 136,174 SQUARE FEET OR 3.126 ACRES MORE OR LESS.

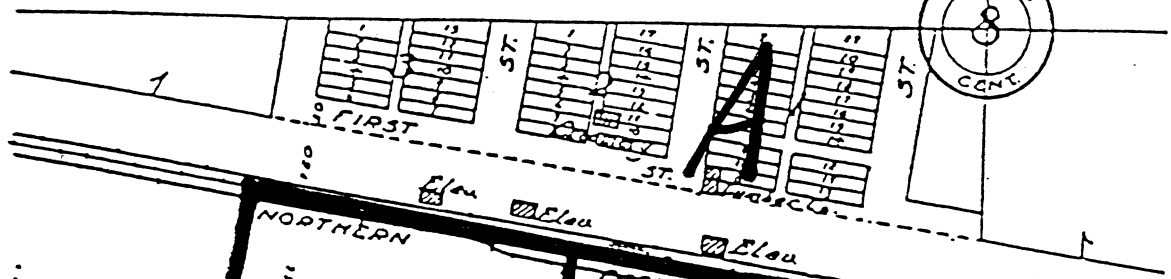
- Commercial
- Residential
- Agricultural

# DENHOFF

DENHOFF TWP.

160

160



A

A

A

NUMBER 112040  
 Change ordered  
 Sheridan County Zoning  
 on August 5, 2003

34 (40 acres)  
 on 10-146-75  
 to Commercial  
 own on map.

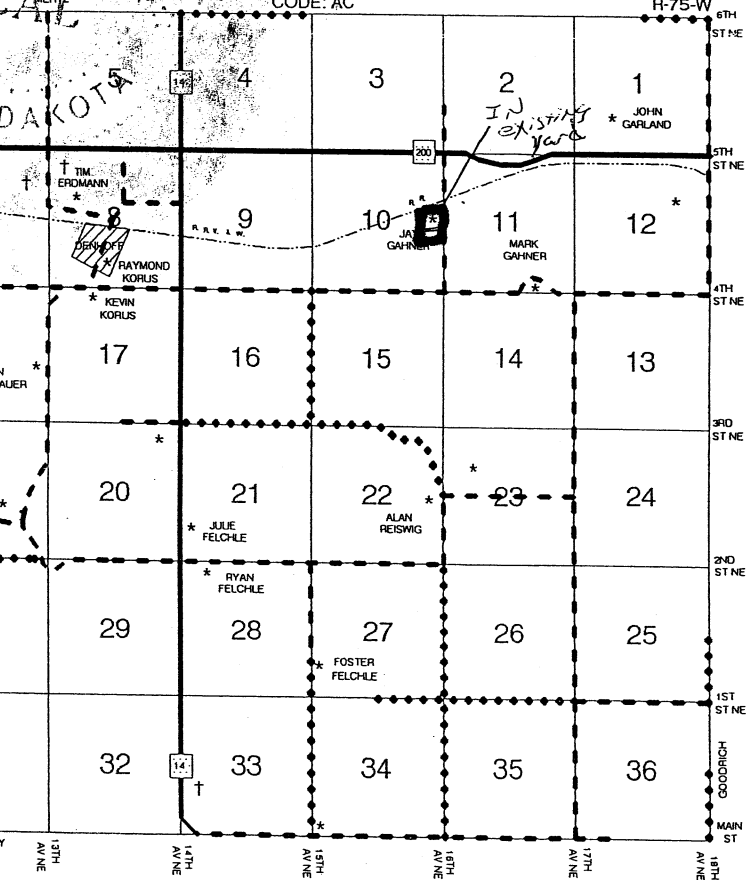
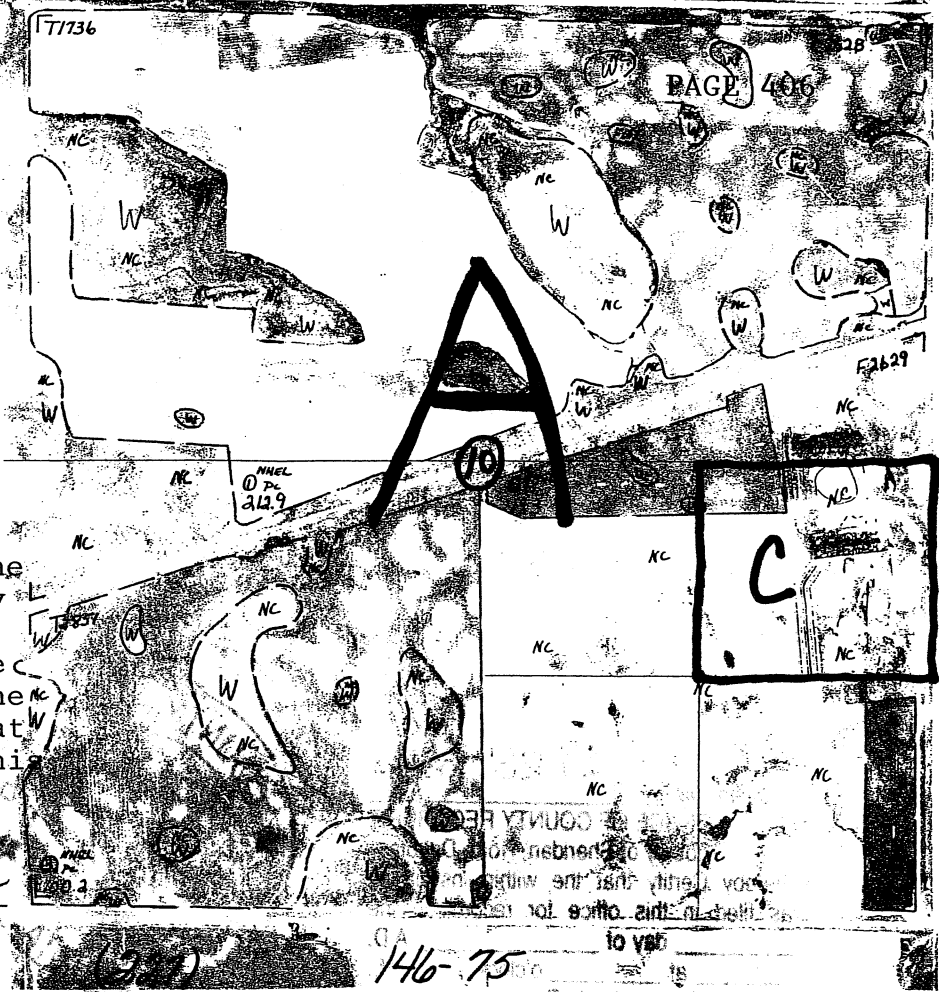
of North Dakota  
 of Sheridan

Shirley A. Murray, County Auditor  
 for in and for said County  
 State, do HEREBY CERTIFY  
 I have carefully compared  
 foregoing with original  
 in my office and that the  
 is a true and correct copy  
 of.

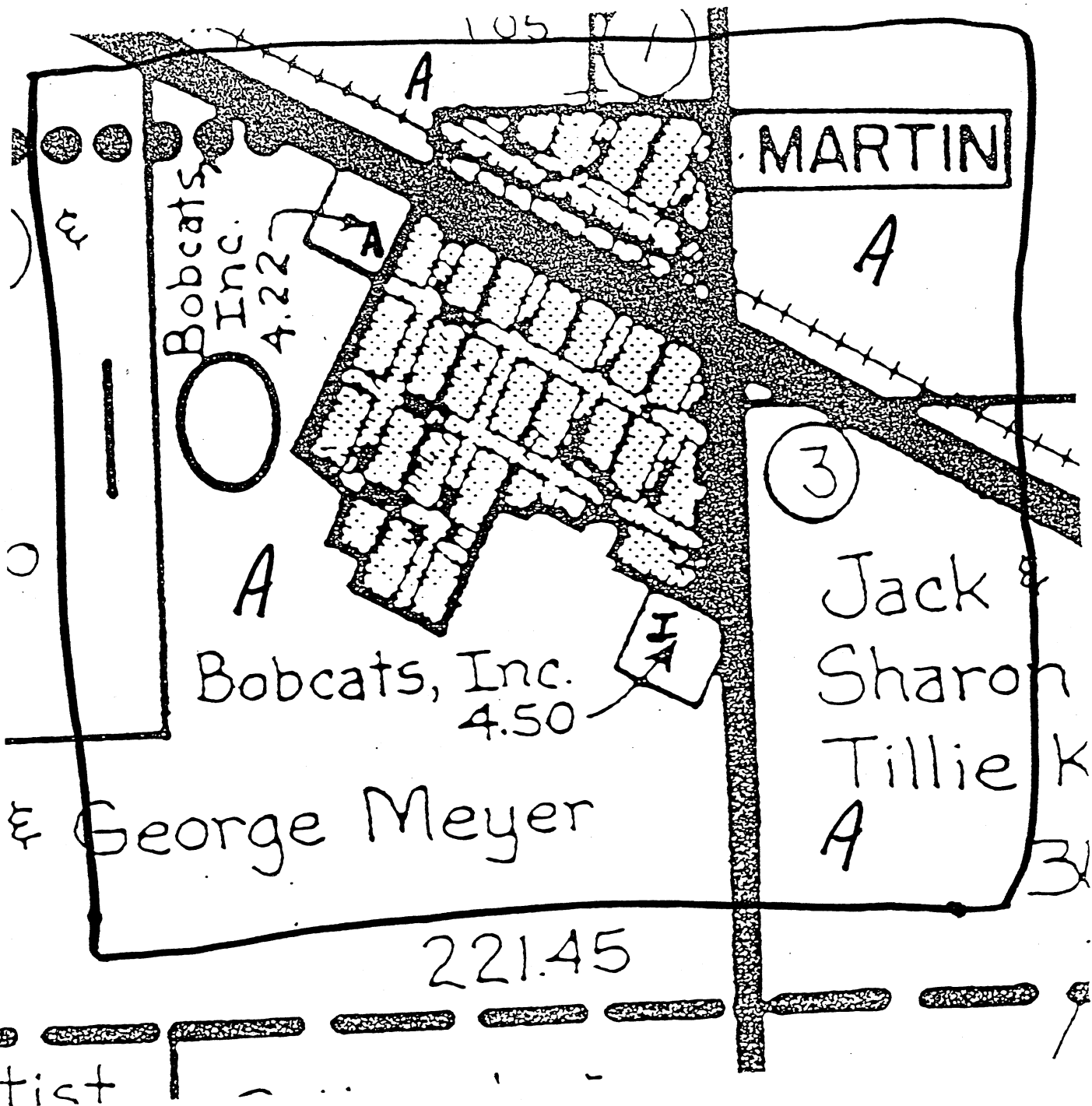
WITNESS WHEREOF, I have hereunto  
 set my hand and affixed the seal  
 of said Sheridan County, at  
 Bismarck, in said County, on this  
 5th day of August, 2003.

DAN  
*Shirley A. Murray*

Shirley A. Murray  
 Sheridan County Auditor  
 DENHOFF DIRECTORY



BA	AX	AF	AP
AK	AH	AU	AA
AL	AI	AO	AY
AW	AT	AJ	AS
AV	AR	AN	AC
AD	AM	BB	AZ



A - Agricultural  
 I - Industrial